

SIDE SEWER SPECIFICATIONS

1. ALL PRIVATE SIDE SEWER CONSTRUCTION REQUIRES A PERMIT AND THE PAYMENT OF A FEE. THE PERMIT APPLICATION WILL REQUIRE THE COMPLETE LEGAL DESCRIPTION, ADDRESS, AND THE DIMENSIONS OF THE PROPERTY TO BE SERVED.
2. ALL CONSTRUCTION IN THE PUBLIC RIGHT-OF-WAY MUST BE DONE BY A LICENSED SEWER CONTRACTOR, AFTER PAYMENT OF ALL APPLICABLE FEES AND PERMITS ISSUED BY AGENCY OF JURISDICTION.
3. ALL HOUSE PLUMBING OUTLETS MUST BE CONNECTED TO THE SANITARY SEWER.
4. NO DOWNSPOUT, FLOOR DRAINS, OR STORM DRAINAGE MAY BE CONNECTED TO THE SANITARY SEWER.
5. MATERIAL PIPE -GASKET JOINTED PVC-SDR 35 OR ASTM D-3034
-GASKET JOINTED DUCTILE IRON CLASS 50

FITTINGS -GASKETED PVC ASTM D-3034
-DUCTILE IRON MJ AWWA C153

*ALL FITTINGS MUST BE GASKETED
6. MINIMUM SLOPE: 4-INCH DIAMETER PIPE - 2% (1/4 INCH FALL PER FOOT)
6-INCH DIAMETER PIPE - 1% MINIMUM GRADE

MAXIMUM SLOPE: ALL PIPE 50%
7. PIPES SHALL BE LAID IN STRAIGHT LINE BETWEEN BENDS. MAKE ALL CHANGE IN LINE OR GRADE WITH LESS THAN OR EQUAL TO 45 DEGREES.
8. INCREASES IN PIPE SIZE SHALL BE MADE BY MANUFACTURED FITTINGS.
9. PIPE SHALL BE BEDDED FROM UNDISTURBED TRENCH WALL TO UNDISTURBED TRENCH WALL ON EACH SIDE OF THE PIPE AND FROM 2 INCHES BELOW TO 2 INCHES ABOVE THE PIPE WITH PEA GRAVEL.
10. THE SIDE SEWER SHALL BE INSPECTED BY DISTRICT STAFF PRIOR TO BACKFILLING. THE SIDE SEWER SHALL BE PLUGGED AND TESTED BY FILLING WITH WATER OR AIR. LEAKAGE RATE SHALL NOT EXCEED 0.31 GAL/HOUR FOR 4-INCH PIPE AND 0.47 GAL/HOUR FOR 6-INCH PIPE, PER 100 FEET OF PIPE FOR WATER OR MUST MAINTAIN 4 POUNDS OF PRESSURE FOR A MINIMUM OF FIFTEEN (15) MINUTES. A DISTRICT INSPECTOR SHALL OBSERVE REMOVAL OF THE PLUG.
11. SEWER LINES SHALL HAVE A DISTRICT APPROVED CLEANOUT INSTALLED AT EVERY COMBINATION OF FITTINGS TOTALING 90 DEGREES, AT LEAST EVERY 100 FEET, AT EVERY INCREASE/DECREASE IN PIPE SIZE, AND NO MORE THAN 3 FEET FROM THE FOUNDATION OF THE BUILDING.
12. A 6-INCH SIDE SEWER WILL BE ALLOWED TO SERVE A MAXIMUM OF SIX (6) SINGLE-FAMILY RESIDENCES.
13. A 4-INCH SIDE SEWER WILL BE ALLOWED TO SERVE ONLY ONE (1) SINGLE-FAMILY RESIDENCE.
14. PARALLEL WATER AND SEWER LINES SHALL BE SEPARATED BY 10 FEET HORIZONTALLY WHENEVER POSSIBLE. WATER AND SEWER LINES SHALL HAVE A VERTICAL SEPARATION OF 18 INCHES IF A CROSSING IS NECESSARY. THE SEWER LINE SHALL NOT CROSS OVER THE TOP OF A WATER LINE.
15. RIGHT-OF-WAY RESTORATION SHALL EQUAL OR EXCEED THE ORIGINAL CONDITION, AS APPROVED BY AGENCY OF JURISDICTION.
16. TRENCH BACKFILL UNDER PAVED AREA SHALL BE 5/8-INCH MINUS CRUSHED SURFACING TOP COURSE; FULL TRENCH DEPTHS COMPACTED IN 12-INCH LIFTS.
17. TEMPORARY REPAIRS OR ABANDONMENT OF A SIDE SEWER REQUIRE THE SIDE SEWER TO BE CUT AND CAPPED AT THE EASEMENT/PROPERTY LINE. CAP TO BE PVC PLAIN END PLUG OR OTHER APPROVED WATERTIGHT PLUG.
18. CONNECTION OF A SIDE SEWER TO AN EXISTING OR NEW STUB REQUIRES A CLEANOUT INSTALLED AT THE EASEMENT/PROPERTY LINE.



OLYMPIC VIEW WATER & SEWER DISTRICT

REVISIONS

STANDARD DETAIL

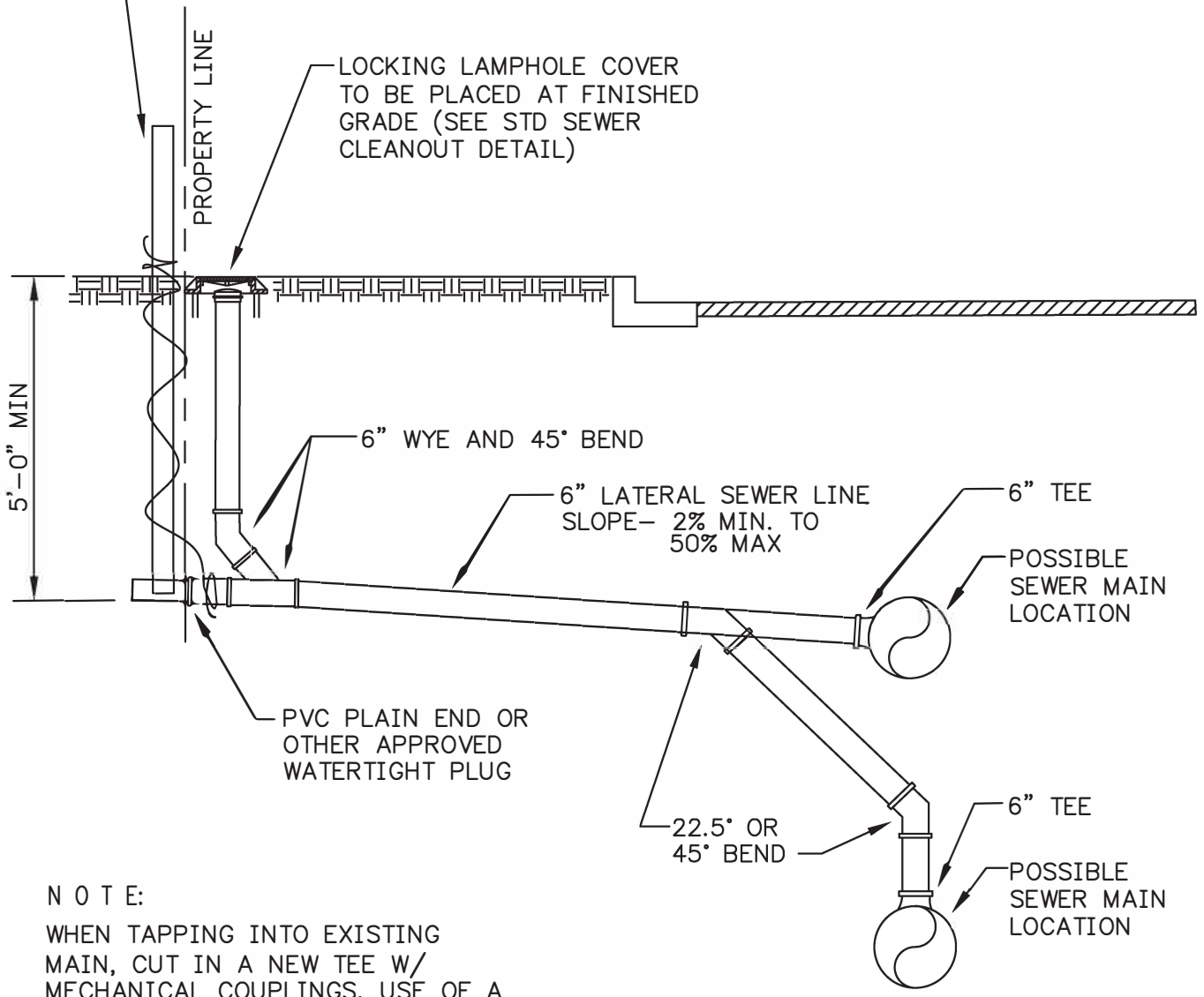
SIDE SEWER SPECIFICATIONS

DATE 10/25/18

SCALE NTS

DWG NO. S-1

(FOR FUTURE DEVELOPEMENT)
 PLACE 2X4 AT END OF SIDE SEWER STUB AND CUT TO LENGTH TO INSURE 3 FEET EXTENDS ABOVE GRADE. PAINT TOP 18 INCHES WHITE. IN 3 INCH HIGH LETTERS STENCIL THE NUMBER OF EVEN FEET FROM GROUND ELEVATION TO THE SEWER STUB INVERT. 8 GAUGE WIRE TO BE DOUBLE WRAPPED AROUND PIPE AND 2X4 STAKE AT OR ABOVE FINISHED GRADE.

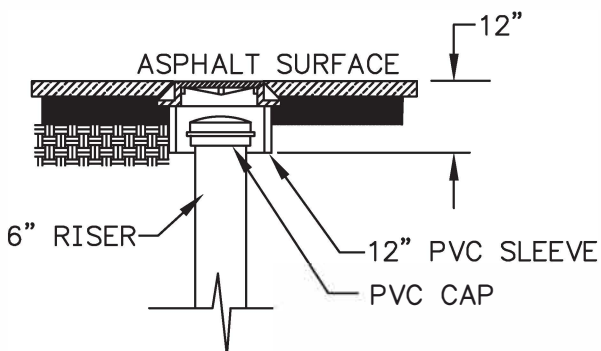
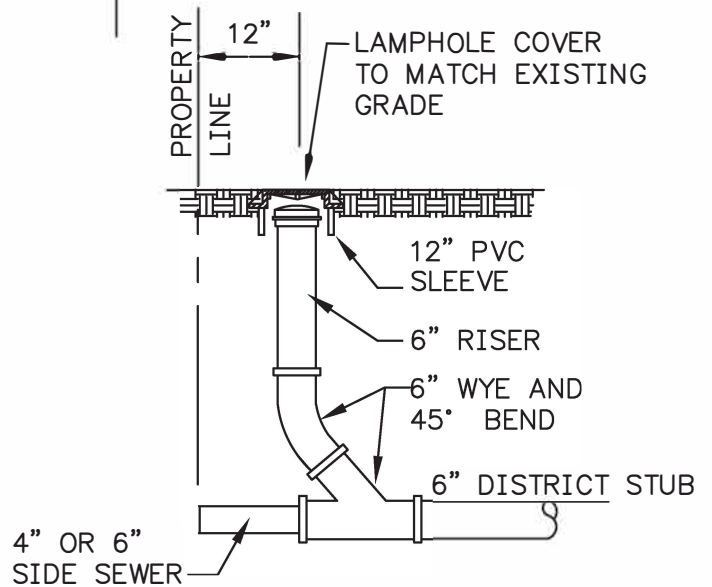
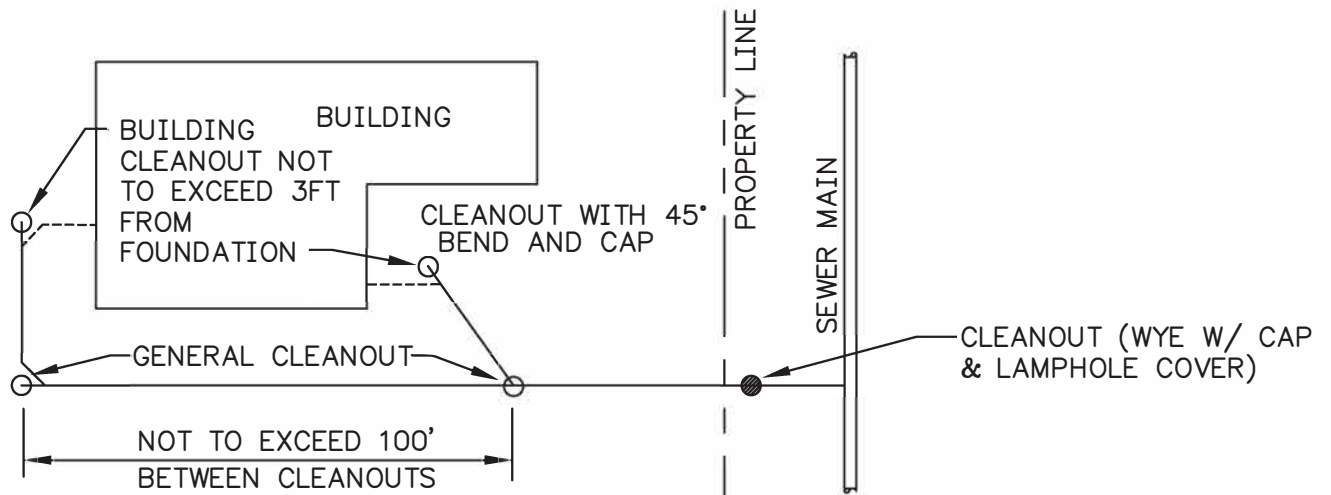


NOTE:
 WHEN TAPPING INTO EXISTING MAIN, CUT IN A NEW TEE W/ MECHANICAL COUPLINGS. USE OF A SADDLE AND TAP IS ALLOWED ONLY ON PVC MAINS. PLACEMENT OF TEE SHALL DEPEND ON DEPTH OF SEWER MAIN. AS A MINIMUM, THE TEE SHALL BE PLACED AT A 45 DEGREE ANGLE.

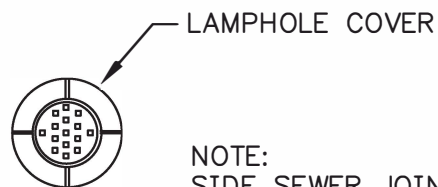


OLYMPIC VIEW WATER & SEWER DISTRICT

REVISIONS		STANDARD DETAIL		
		TYPICAL SIDE SEWER		
DATE	10/25/18	SCALE	NTS	DWG NO. S-2



TYPICAL CLEANOUT UNDER ASPHALT



NOTE:
SIDE SEWER JOINTS SHALL BE GASKETED



OLYMPIC VIEW WATER & SEWER DISTRICT

REVISIONS		STANDARD DETAIL		
		SEWER CLEANOUT DETAIL		
DATE	10/25/18	SCALE	NTS	DWG NO. S-3